

The D1/D2

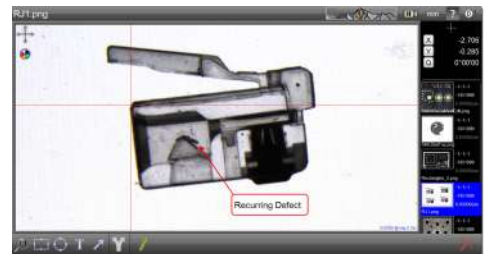
Easy image markup and annotations for on screen measurements for camera based inspection systems.

- ✓ Image archiving, markup and basic dimensioning.
- ✓ Reliable VED based measurements with the D2 upgrade.



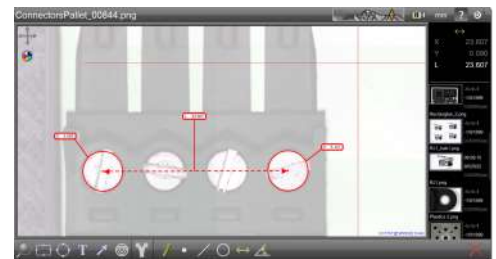
Clean, Intuitive Design

Access easy to use markup and annotation tools for image markup. Call attention to defects, specific features, or other areas of interest in your image, enhancing the sharing of information for your inspection tasks



Simple On-screen Measurements

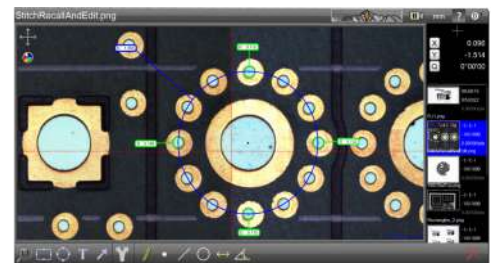
Perform simple on screen measurements of lines, points, circles, distances and angles using the video crosshairs tool. Translate or rotate the crosshairs, and control crosshairs color, to enable simple point collection on your geometry.



Construction of distances and angles is simple using the available part view. Blend the image between camera frame and part view to see inspection results and inspection piece in one simultaneous view.

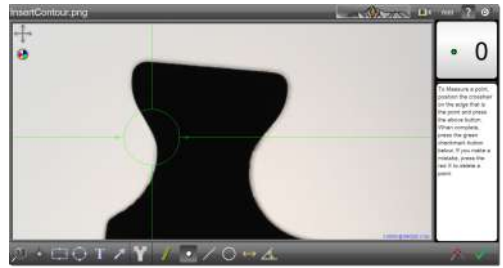
Image Archiving

Save images directly to a variety of popular image formats(png, jpeg, bmp) or attach them to an email for quick delivery of collected images.



D2 Upgrade

Improve measurement reliability and repeatability with the addition of Video Edge Detection in D2. Perform quick and accurate measurements with the Active Crosshair VED probe.



Industry Leading Operating System Platform

The Windows® operating system represents the current enterprise solution for computer software operating systems. You gain the performance and reliability of a globally recognized software solution as part of your measuring machine package using a DirectShow® compliant camera device.

MetLogix D Series Features Matrix	D1	D2
Image archiving	✓	✓
Image markup	✓	✓
Dimensioning	✓	✓
Video Edge Detection		✓
Active crosshairs		✓

Help and Resources

Please visit the support section at www.metlogix.com for access to MetLogix product documentation.

Watch tutorial videos for popular Mx functions at <http://www.youtube.com/metlogix>

Join the discussion on Facebook, search "MetLogix".

Contacts

175 Canal Street, Suite 503, Manchester, NH 03101 USA

Tel: 603.836.4452

Fax: 603.369.6499

Email: support@metlogix.com

Web: www.metlogix.com