

MetLogix



## GxLink *User's Guide*

---



# GxLink

---

## *User's Guide*

Published by:  
MetLogix Incorporated  
175 Canal Street  
Manchester, NH 03101 USA

User's Guide part number: 17000-00  
Publishing date: January 2024.  
Printed in United States of America  
Copyright © 2024 by MetLogix, Incorporated, Manchester, New Hampshire

GxLink version: 1.xx.xx

All information set forth in this document, all rights to such information, any, and all inventions disclosed herein and any patents that might be granted by employing the materials, methods, techniques, or apparatus described herein are the exclusive property of MetLogix, Incorporated., Manchester, New Hampshire.

Terms, conditions, and features referenced in this document are subject to change without notice.

No part of this document may be reproduced, stored in a retrieval system, or transmitted in any form or by any means, electronic, mechanical, photocopying, recording, or otherwise, without prior written permission of MetLogix, Inc. Requests to MetLogix, Inc. for permission should be addressed to the Customer Services Department, MetLogix, Incorporated, 175 Canal Street, Manchester, New Hampshire 03101.

## **Limit of liability and disclaimer of warranty**

While this guide was prepared with great care, MetLogix makes no representations or warranties with respect to the accuracy or completeness of the contents of this book and specifically disclaims any implied warranties of merchantability or fitness for a particular purpose. The advice, methods and instructions contained in this book might not be suitable for your situation. When in doubt regarding suitability, you are encouraged to consult with a professional where appropriate. MetLogix shall not be liable for any loss of profit or any damages, including but not limited to special, incidental, consequential, or other damages.

## **Trademarks**

MetLogix, is a registered trademark of MetLogix, Inc.

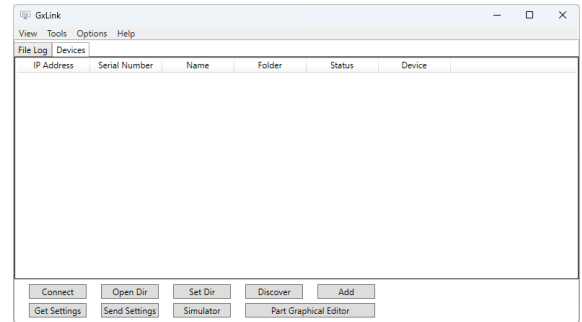


# Introduction

GxLink is a powerful application that can be installed in Windows OS system and used to interface communication between one or more MetLogix Gx200 readouts and the computer. This connection is established via a wired or wireless network connection. Once connected, measurement results can be transferred from the Gx200 to the GxLink application over the network.

## What Can You Do With GxLink?

The GxLink application allows users to configure one or more Gx200 devices to send a measurement results file, in CSV or TSV format, directly to a specified folder on the target PC. This folder can be local to the GxLink PC, or a mapped network folder, accessible by the GxLink PC. Data received in the GxLink application will be displayed in a separate *tabbed* window for each device that is connected. This data can then be sent directly to a Microsoft Excel sheet, or it can be copied to, and pasted from, the Windows clipboard.



## Using the GxLink

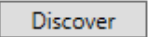

To use the GxLink application with a Gx200 readout, the GxLink software must be installed on a computer running the Windows operating system. The computer should also be connected to a local network via a wired or wireless network device.



To send data from an Gx200 to an instance of the GxLink software, the Gx200 must have GxLink enabled in setup and the readout connected to a network.

## Setting up the GxLink application

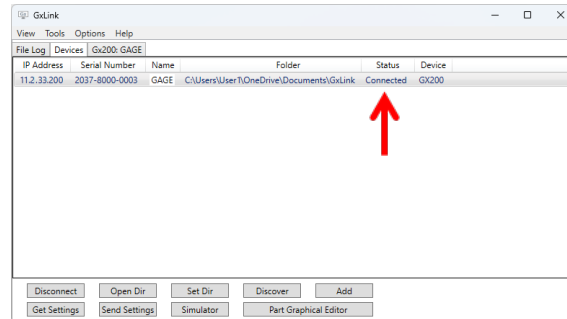
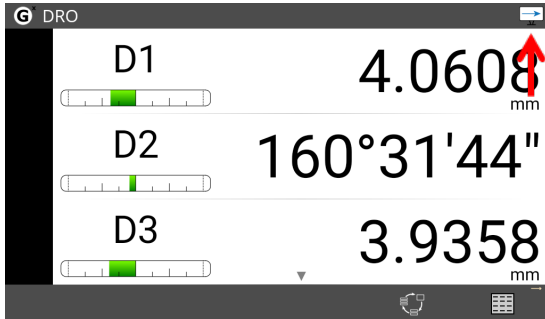
With the Gx200 readout connected to the PC's network and the GxLink option enabled in Setup, connecting one or more readouts to the GxLink application is accomplished by *Discovering* the readout from the **Devices** setup page in the GxLink software. The devices are identified by their serial number. To connect to a specific Gx200 readout, highlight the target device and then press the **Connect** button. This process can be summarized as:

- 1 Press the **Discover** button to locate and list all the Gx200 connected to the network (if the target device is not already listed). The target readout will now be listed. Alternatively, use the **Add** button to add to the list the target Gx200 readout if the IP address is known. 
- 2 Rename the target device to a more meaningful name, if desired, by double-clicking on the name field of the target device and typing in the new name. Then press the ENTER key on the PC.
- 3 Highlight the target device and press the **Connect** button. The status of the device in the list will change from *Not connected* to *Connected*. 



## NOTE

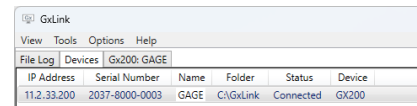
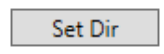
If the device discovery fails to successfully locate target readout, verify that the Gx200 is connected to a network. If the Gx200 is discovered but fails to connect, verify that a valid IP address is reported in the Export setup menu (Setup -> Export).



### Setting target directory

A local or networked directory can be set on the computer to save the transferred data files. The GxLink sets the default to directory to a subdirectory called *GxLink* in the current Setup documents directory. To set the default to a different directory:

- 1 Highlight the target device in the Devices tab list then press the **Set Dir** button.
- 2 Browse to the target directory using Windows files explorer.
- 3 Select the desired directory and press the **OK** button. The path to the selected directory will be shown on the *Folder* field of the device.



The **Open Dir** button can be used to open the directory assigned to the currently selected Gx200 device.

## Data Operations

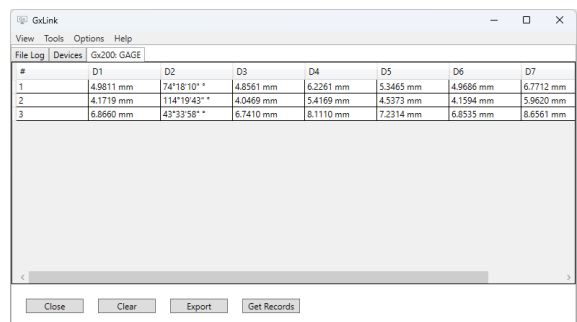
Each connected Gx200 device has its own data tab within the GxLink main window. If the tab of a connected Gx200 readout is not open, double-clicking on the device in the device list will open the tab.

### Device data tab

The device data tab contains the name of the device in the tab title, a set of data columns and tab manipulation buttons. The column names are set automatically to the data that has been imported into GxLink application. The tab manipulation buttons include:

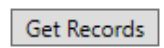
- **Close** button – Used to close the tab.
- **Clear** button – Clears the contents of the tab when pressed.
- **Export** button – Opens an Excel sheet and posts the current tab data.
- **Get Records** button – Requests new data records from the Gx200 device associated with that data tab.

A device data tab can be *dragged* out of the main GxLink window, creating its own standalone window. The individual device windows can be recombined with the GxLink application by *dragging* them back in, next to the existing tabs.



### Sending Gx200 Data to GxLink

Data is sent to GxLink using the Export Data function in Gx200 or by requesting new data from GxLink using the **Get Records** button. Received data is formatted according to the selected setting in the Export setup page of the Gx200.





## NOTE

When data is sent from an Gx200 to the GxLink application, only the most recently transferred data will be displayed in the corresponding device tab and a file is saved in the assigned target directory. When new data is received from the Gx200, it replaces currently displayed data, and a new file is saved in the assigned directory.

### Copy/Paste

Results rows within the tab views can be selected using the left mouse button. Selected data rows can be copied to the Windows clipboard according to standard windows convention.

### Sortable columns

Ordered sorting of the data columns can be achieved by clicking on the column header label. Column contents will be toggled between ascending and descending order.

### Send selected data to Excel

Selected rows in the tabbed view can be sent directly to Microsoft Excel. This feature requires that Microsoft Excel is installed on, and licensed to, the same computer the GxLink is running on. Select the rows of data you would like to send and press the **Export** button. Pressing the **Export** button with no rows selected will send the entire contents of the data tab.

## Gx200 Simulator

GxLink contains a simulator function that emulates Gx200 functions. The Gx200 simulator is a powerful tool that can be used to set up the Gx200 readout, test formulas and emulate input and output operations. The simulator contains most functions found in the Gx200.

### Get Settings

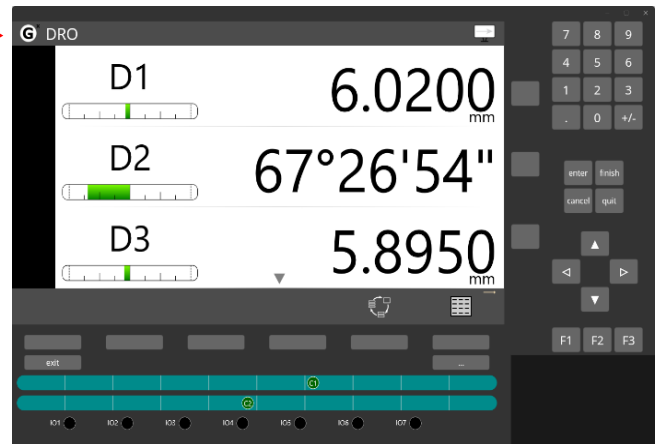
Before starting to use the simulator, connect to a target Gx200 readout by following the steps above. Once GxLink and the target Gx200 device are communicating, highlight the target Gx200 device in the list and then press the **Get Settings** button to fetch its current settings.

Get Settings

### Using the Simulator

To use the simulator, press the **Simulator** button. A Gx200-like application will open with settings and parts of the target Gx200 readout. If this is the first time the simulator is being used on the PC, GxLink will prompt for the installation of the simulator. Select **YES** to continue with the installation or **NO** to cancel. Ensure the **Launch** after installation checkbox is checked. Otherwise, press the Simulator button again. Once the simulator is running, perform settings and parts edits as desired.

Simulator



## NOTE

The simulator **MUST** first be installed on the PC before it can be used. Exporting/importing settings/parts from/into the simulator, the default location is the Gx200\_Exports subfolder of the Documents system folder. So, to import a part/settings into the simulator, the part/settings file must be copied into the Gx200\_Export subfolder.

## Sending Settings

After making changes to settings and parts in the simulator, test the workflow to ensure they perform the desired operations. Once satisfied with the changes, you can send the edited settings and parts back to the target Gx200 or to a different unit that is in the list and currently connected, by highlighting the unit in the list and pressing the **Send Settings** button. The simulator will close, and a message will be displayed showing the result of the settings and parts transmission to the selected device.

**Send Settings**

## Part Graphical Editor

It may be necessary to prompt the readout operator on how to place the part under measure into the gage fixture using visual cues. This can be accomplished using the intuitive *Graphic* gage type display. To design the graphical gage, use the *Part Graphical Editor* in GxLink. To use the Part Graphical Editor, follow these steps:

- 1 Run GxLink and connect to a target Gx200 readout.
- 2 Highlight the target Gx200 readout and then press the **Part Graphical Editor** button. A tab named *Gx200 Graphical Editor: <Readout name>* will open.

**Part Graphical Editor**

### Gx200 Graphical Editor tab

The Gx200 Graphical Editor tab contains the name of the device in the tab title, an image marking area, a parts dropdown list field, a dimensions column, and tab manipulation buttons. The tab manipulation buttons include:

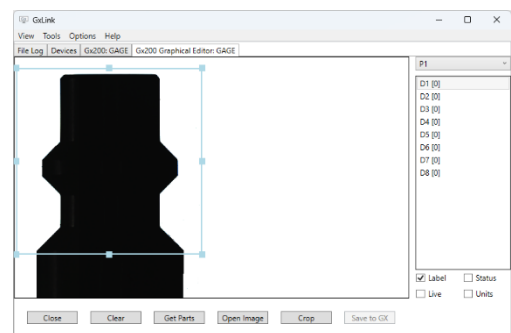
- **Close** button – Used to close the tab.
- **Clear** button – Clears the contents of the tab when pressed.
- **Get Parts** button – Gets all parts in target Gx200 readout.
- **Open Image** button – Opens Windows file browser for browsing to an image to be used.
- **Crop** button – Crops the image to the size of bounding square.
- **Save to Gx** button – Saves the graphical data to the Gx200 device associated with the tab.



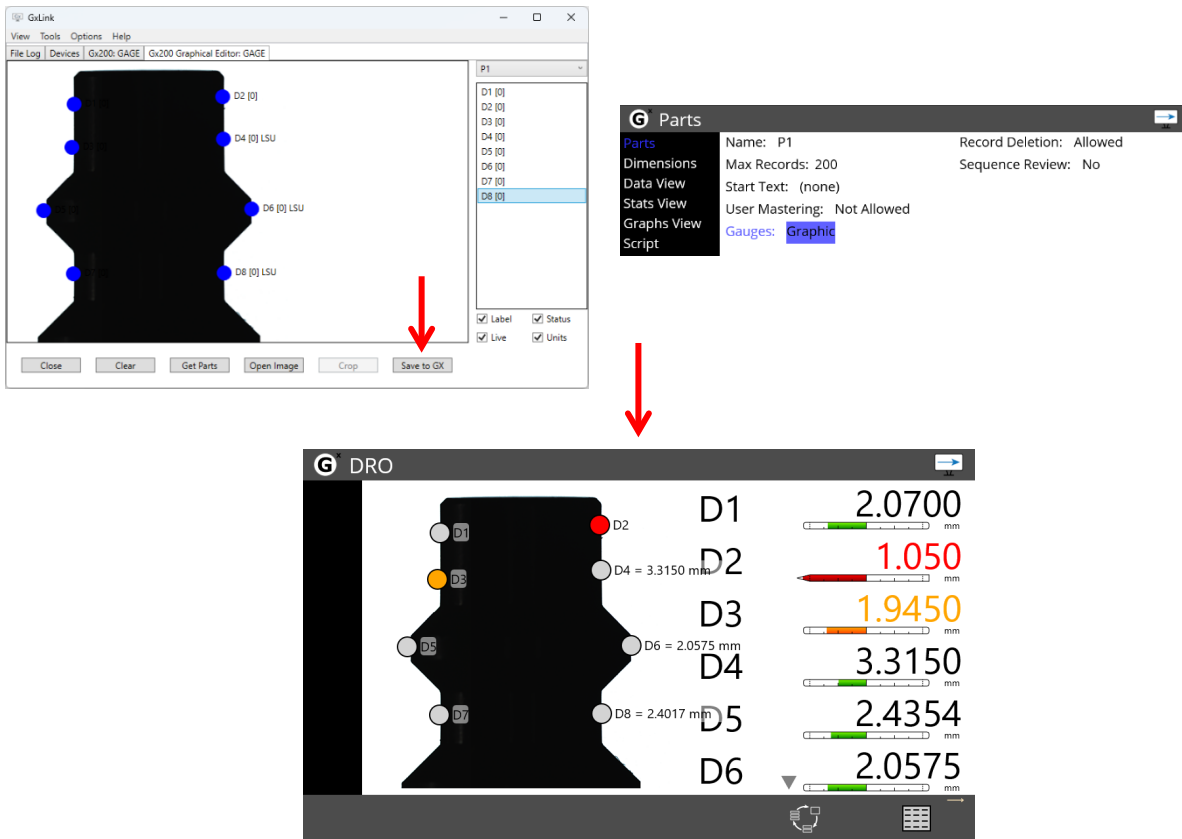
### Marking the Part Graphics

The first step to marking a part graphics is to get the parts from the Gx200 device. Press the **Get Parts** button to get the parts. Then:

- 1 Select the desired part from the dropdown list.
- 2 Press the **Open Image** button and browse to the desired image.
- 3 Resize and move the marquee bounding square to include the desired regions of the image.
- 4 Press the **Crop** button to crop the image under the square.
- 5 Add dimensions information to the image by selecting the dimension and clicking on the image.
- 6 Drag the dimension to reposition on the image as desired.
- 7 Once done, press the **Save to Gx** button to send the information back to the Gx200 device.
- 8 To display the graphic on the Gx200 device, set the part gauges field to *Graphic*.







## Additional Functions

Listed below are some additional settings and controls in the GxLink software:

### View menu

Select the corresponding item from the view menu to add a new tab for the *File Log* and *Devices* if the tab has been dragged out. Otherwise, it brings the tab to the forefront.

### Tools menu

The GxLink software contains tools to restore the previous status of the unit. The submenu tools include:

- **Simulator** – This menu item opens the simulator using the settings from previous session unlike when opening it using the **Simulator** button. If it is the first time, the simulator will start with default settings.
- **Backup** – The backup function gets settings and parts from the connected Gx200 and saves them to the PC.
- **Restore** – The restore function loads the connected Gx200 with unmodified settings and parts. These configuration parameters are from the last backup.

### Options menu

The Options menu provides a way to set the preferences for the GxLink application. The submenu include:

- **Launch on Startup** – When checked, GxLink will launch when Windows OS starts.
- **Language** – Brings up a language selection dialog. Select the desired language and press the OK button. The application restarts to apply the language change.

### Help menu

Access a copy of the User and Setup guide in PDF format by selecting the *Help...* item from the **Help** menu. Software version information can be found in the **Help -> About** menu item.

### **File Log**

A tab displaying a history of all transferred data files from connected Gx200 devices to the GxLink application. The file log is cleared on program shutdown.

### **Run in the Background**

The GxLink application can be minimized to the Windows Taskbar system tray. The application can be restored by single-clicking the tray icon. The application can be closed by right clicking on this tray icon. When exiting the application, you will be given the option to run in the background, close the application entirely, or to return to the GxLink window.

# Product Warranty

This product is warranted against defects in workmanship, material, and design for two (2) years from date of delivery to the extent that METLOGIX will, at its sole option, repair or replace the product or any part thereof which is defective, provided, however, that this warranty shall not apply to products subjected to tampering or, abuse, or exposed to highly corrosive conditions.

THIS WARRANTY IS IN LIEU OF ALL OTHER WARRANTIES WHETHER EXPRESS OR IMPLIED AND METLOGIX HEREBY DISCLAIMS ALL OTHER WARRANTIES, INCLUDING, WITHOUT LIMITATION, ANY WARRANTY OF FITNESS FOR A PARTICULAR PURPOSE OR MERCHANTABILITY. METLOGIX SHALL NOT BE LIABLE FOR ANY INCIDENTAL OR CONSEQUENTIAL DAMAGES, INCLUDING, BUT NOT LIMITED TO, ANY ANTICIPATED OR LOST PROFITS.

This warranty is voidable if the purchaser fails to follow any and all instructions, warnings or cautions in the product's Instruction Manual.

If a manufacturing defect is found, METLOGIX will replace or repair the product or replace any defective part thereof without charge; however, METLOGIX's obligation hereunder does not include the cost of transportation which must be borne by the customer. METLOGIX assumes no responsibility for damage in transit, and any claims for such damage should be presented to the carrier by the purchaser.

# SOFTWARE LICENSE AGREEMENT

NOTICE TO USER: PLEASE READ THIS AGREEMENT CAREFULLY. BY COPYING, INSTALLING, OR USING ALL OR ANY PORTION OF THE SOFTWARE, YOU ACCEPT ALL TERMS AND CONDITIONS OF THIS AGREEMENT, INCLUDING, IN PARTICULAR THE PROVISIONS ON: TRANSFERABILITY IN SECTION 4; WARRANTY IN SECTIONS 6 AND 7; AND LIABILITY IN SECTION 8. YOU AGREE THAT THIS AGREEMENT IS LIKE ANY WRITTEN NEGOTIATED AGREEMENT SIGNED BY YOU. THIS AGREEMENT IS ENFORCEABLE AGAINST YOU AND ANY LEGAL ENTITY THAT OBTAINED THE SOFTWARE AND ON WHOSE BEHALF IT IS USED; FOR EXAMPLE, IF APPLICABLE, YOUR EMPLOYER. IF YOU DO NOT AGREE TO THE TERMS OF THIS AGREEMENT, DO NOT USE THIS SOFTWARE.

METLOGIX AND ITS SUPPLIERS OWN ALL INTELLECTUAL PROPERTY IN THE SOFTWARE. THE SOFTWARE IS LICENSED, NOT SOLD. METLOGIX PERMITS YOU TO COPY, DOWNLOAD, INSTALL, USE, OR OTHERWISE BENEFIT FROM THE FUNCTIONALITY OR INTELLECTUAL PROPERTY OF THE SOFTWARE ONLY IN ACCORDANCE WITH THE TERMS OF THIS AGREEMENT. USE OF SOME METLOGIX AND SOME NON-METLOGIX MATERIALS AND SERVICES INCLUDED IN OR ACCESSED THROUGH THE SOFTWARE MAY BE SUBJECT TO OTHER TERMS AND CONDITIONS TYPICALLY FOUND IN A SEPARATE LICENSE AGREEMENT, TERM OF USE OR "READ ME" FILE LOCATED WITHIN OR NEAR SUCH MATERIALS AND SERVICES.

THE SOFTWARE MAY INCLUDE TECHNOLOGY DESIGNED TO PREVENT UNAUTHORIZED USE AND COPYING. THIS TECHNOLOGY MAY CAUSE YOUR COMPUTER TO CONNECT TO THE INTERNET WITHOUT NOTICE ON INSTALL, LAUNCH, AND ON AN INTERMITTENT OR REGULAR BASIS THEREAFTER. ONCE CONNECTED, THE SOFTWARE WILL TRANSMIT INFORMATION TO METLOGIX VIA AN INTERNET CONNECTION. METLOGIX MAY USE THE TRANSMITTED INFORMATION, AS WELL AS OTHER INFORMATION YOU OR OUR THIRD PARTIES MAY PROVIDE TO US, TO DETECT OR PREVENT USE OF METLOGIX SOFTWARE THIS IS FRAUDULENT, NOT VALIDLY LICENSED, OR NOT USED IN ACCORDANCE WITH A VALID LICENSE. SOFTWARE THAT FAILS TO CONNECT TO METLOGIX AND SOFTWARE THAT CONNECTS TO METLOGIX WHOSE USE IS FOUND TO NOT TO BE PERMITTED MAY OFFER ONLY LIMITED FUNCTIONALITY OR MAY NOT OPERATE AT ALL.

## 1. Definitions

"MetLogix" means MetLogix, Incorporated, a Delaware corporation, 175 Canal Street, Manchester, New Hampshire 03101.

"MetLogix Runtime(s)" means MetLogix GX200, MetLogix M1, MetLogix L3, MetLogix L2, MetLogix L1, MetLogix Test Builder, or MetLogix CFR21.

"Computer" means a virtual or physical computer device that accepts information in digital or similar form and manipulates it for a specific result based on a sequence of instructions.

"Internal Network" means a private, proprietary network resource accessible only by employees and individual contractors (i.e., temporary employees) or a specific corporation or similar business entity. Internal Network does not include portions of the Internet or any other network community open to the public, such as membership or subscription driven groups, associations, and similar organizations.

"Output File" means an output file you created with the Software.

"Permitted Number" means one (1) unless otherwise indicated under a valid license (e.g., volume license) granted by MetLogix.

"Software" means (a) all of the information with which this agreement is provided, including but not limited to: (i) all software files and other computer information.

## 2. Software License

If you obtained the Software and any required serial number(s) from MetLogix or one of its authorized licensees (resellers) and as long as you comply with the terms of this Agreement, MetLogix grants you a non-exclusive license to install and use the Software in a manner consistent with its design and Documentation and as further set forth below.

## **2.1 Limited Use**

### **2.1.1**

The Software, or portions of the Software, may allow installation and use without a serial number. If so, you may install but not use such non-serialized Software on any number of Computers as part of an organizational deployment plan. Further, you may install and use such non-serialized Software on any number of Computers for demonstration, evaluation, and training purposes only and only if any Output Files or other material produced through such use are used only for internal, non-commercial, and non-production purposes. You may not use such non-serialized Software after any applicable timeout period has ended, unless you input a valid serial number. ACCESS TO AND USE OF ANY OUTPUT FILES CREATED WITH SUCH NON-SERIALIZED SOFTWARE IS ENTIRELY AT YOUR OWN RISK.

### **2.1.2**

The Software, or portions of the Software, that are provided with a serial number designated for “evaluation purposes” or other similar designation (such as Software or a serial number supplied as “EVAL” under a separate ordering document) and that includes an expiration date (“Evaluation Software”) may only be installed and used on Computers for demonstration, evaluation, and training purposes only and only if Output Files or other materials produced through such use are used only for internal, non-commercial, and non-production purposes. The Evaluation Software will automatically time out with or without prior notice. You may not use such Evaluation Software after any applicable time-out period has ended, unless you input a valid serial number. USE OF ANY OUTPUT FILES CREATED WITH SUCH NON-SERIALIZED SOFTWARE IS ENTIRELY AT YOUR OWN RISK.

### **2.1.3 General Use**

Except as described otherwise herein, you may install and use one (1) copy of the Software in accordance with the Documentation only on the Permitted Number of your compatible Computers into which you enter a valid serial number.

### **2.1.4 Distribution from a Server**

The Software may not be distributed from a Server or an Internal Network.

### **2.1.5 Dual Boot Platform**

The Software is licensed for use on a specific operating system platform. You must purchase a separate license for use of the Software on each operating system platform.

### **2.1.6 Documentation**

You may make copies of the Documentation for your own internal use in connection with use of the Software in accordance with this Agreement but no more than the amount reasonably necessary. Any permitted copy of the Documentation that you make must contain the same copyright and other proprietary notices that appear on or in the Documentation.

## **3. Intellectual Property Ownership**

The Software and any authorized copies that you make are the intellectual property of and are owned by MetLogix Incorporated. The structure, organization, and source code of the Software are the valuable trade secrets and confidential information of MetLogix Incorporated. The Software is protected by law, including but not limited to the copyright laws of the United States and other countries, and by international treaty provisions. Except as expressly stated herein, this Agreement does not grant you any intellectual property rights in the Software and all rights not expressly granted are reserved by MetLogix Incorporated.

## **4. Restrictions and Requirements**

### **4.1 Notices**

Any permitted copy of the Software that you make must contain the same copyright and other proprietary notices that appear on or in the Software.

### **4.2 Use Obligations**

You agree that you will not use the Software other than as permitted by this Agreement and that you will not use the Software in a manner inconsistent with its design or Documentation.

### **4.3 No Modifications**

You may not modify, port, adapt, or translate the Software.

### **4.4 No Reverse Engineering**

You will not reverse engineer, decompile, disassemble, or otherwise attempt to discover the source code of the Software.

### **4.5 No Unbundling**

The Software may include various applications, utilities, and components, may support multiple platforms and languages, and may be provided to you on multiple media or in multiple copies. Nonetheless, the Software is designed and provided to you as a single product to be used as a single produce on Computers permitted by Section 2. You are not required to install all component parts of the Software, but you may not unbundle the component parts of the Software for use on different Computers. You may not unbundle or repackage Software for distribution, transfer, or resale.

### **4.6 No Transfer**

YOU WILL NOT RENT, LEASE, SELL, SUBLICENSE, ASSIGN OR TRANSFER YOUR RIGHTS IN THE SOFTWARE, OR AUTHORIZE ANY PORTION OF THE SOFTWARE TO BE COPIED ONTO ANOTHER INDIVIDUAL OR LEGAL ENTITY'S COMPUTER EXCEPT AS MAY BE EXPRESSLY PERMITTED HEREIN. You may, however, permanently transfer all your rights to use the Software to another individual or legal entity provided that: (a) you also transfer (i) this agreement, (ii) the serial number(s), the Software affixed to medial provided by MetLogix or its authorized distributor, and all other software or hardware bundled, packaged, or pre-installed with the Software, including all copies, Updates, and Prior Versions (as defined in Section 5); (b) you retain no Updates, Prior Versions, or copies, including backups and copies stored on a Computer; and (c) the receiving party accepts the terms and conditions of this agreement and any other terms and conditions under which you purchased a valid license to the Software. NOTWITHSTANDING THE FOREGOING, YOU MAY NOT TRANSFER EDUCATION, PRE-RELEASE, EVALUATION SOFTWARE, OR NOT FOR RESALE COPIES OF THE SOFTWARE OR SOFTWARE OBTAINS UNDER A METLOGIX VOLUME LICENSE PROGRAM EXCEPT AS MAY BE EXPRESSLY PERMITTED BY METLOGIX WITH THE TERMS OF A VOLUME LICENSE PROGRAM.

### **4.7 No Service Bureau**

You will not use or offer the Software on a service bureau basis.

### **4.8 MetLogix M Series Restrictions**

You may not use MetLogix M Series software on any non-PC device or with any embedded or device version of any operating system.

## **5. Updates**

If the Software is an Update to a prior version of MetLogix software (the "Prior Version"), the following apply:

Your use of this Update is conditional upon your retention of the Prior Version. Therefore, if you validly transfer this Update pursuant to Section 4.6, you must transfer the Prior Version along with it. If you wish to use this Update in addition to the Prior Version, you may only do so on the same computer on which you have installed and are using the Prior Version. Any obligation that MetLogix may have to support Prior Versions may end upon the availability of this Update. No other use of the Update is permitted. Additional Updates may be licensed to you by MetLogix with additional or different items.

## **6. Limited Warranty**

MetLogix warrants to the individual or entity that first purchases a license for the Software for use pursuant to the terms of this agreement that the Software will perform substantially in accordance with the Documentation for the ninety (90) day period following receipt of the Software when used on the recommended operating system and hardware configuration. Non-substantial variation of performance from the Documentation does not establish a warranty right. This limited warranty does not apply to the following which are made available "AS-IS" and without warranty from MetLogix: patches, font software; pre-release (beta), trial, starter, evaluation, product sampler, and not for resale (NFR) copies of the Software including but not limited to Evaluation Software. All warranty claims must be made, along with proof of purchase, to MetLogix within such ninety (90) day period. If the Software does not perform substantially in accordance with the Documentation, the entire liability of MetLogix and its affiliates and your exclusive remedy will be limited to either, at MetLogix' option, replacement of the Software or refund of the license fee you paid for the Software (if any). THE LIMITED WARRANTY SET FORTH IN THIS SECTION GIVES YOU SPECIFIC LEGAL RIGHTS. YOU MAY HAVE ADDITIONAL RIGHTS UNDER LAW WHICH VARY FROM JURISDICTION TO JURISDICTION. METLOGIX DOES NOT SEEK TO LIMIT YOUR WARRANTY RIGHTS TO ANY EXTENT NOT PERMITTED BY LAW.

## **7. Disclaimer**

THE LIMITED WARRANTY IN SECTION 6 IS THE ONLY WARRANTY OFFERED BY METLOGIX, ITS AFFILIATES, AND SUPPLIERS AND IT STATES THE SOLE AND EXCLUSIVE REMEDIES FOR METLOGIX', ITS AFFILIATES', OR SUPPLIERS' BREACH OF THAT OFFERED WARRANTY. THE LIMITED WARRANTY IN SECTION 6 AND ANY STATUTORY WARRANTY AND REMEDY THAT CANNOT BE EXCLUDED OR LIMITED UNDER LAW ARE THE ONLY WARRANTIES APPLICABLE TO THE SOFTWARE. OTHER THAN THOSE OFFERED AND STATUTORY WARRANTIES APPLICABLE TO THE SOFTWARE, METLOGIX, ITS AFFILIATES, SUPPLIERS, AND CERTIFICATE AUTHORITIES DISCLAIM ALL WARRANTIES, CONDITIONS, REPRESENTATIONS, AND TERMS, EXPRESSED OR IMPLIED, WHETHER BY STATUTE, COMMON LAW, CUSTOM, USAGE, OR OTHERWISE AS TO ANY MATTER, INCLUDING BUT NOT LIMITED TO PERFORMANCE, SECURITY, NON-INFRINGEMENT OF THIRD PARTY RIGHTS, INTEGRATION, MERCHANTABILITY, SATISFACTORY QUALITY, AND FITNESS FOR ANY PARTICULAR PURPOSE. OTHER THAN SUCH OFFERED AND STATUTORY WARRANTIES AND REMEDIES, METLOGIX, ITS AFFILIATES, SUPPLIERS, AND CERTIFICATE AUTHORITIES PROVIDE THE SOFTWARE AND ACCESS TO ANY WEBSITES, METLOGIX OR THIRD PARTY ONLINE SERVICES, AND CERTIFICATE AUTHORITY SERVICES AS-IS AND WITH ALL FAULTS. THIS DISCLAIMER OF WARRANTY MAY NOT BE VALID IN SOME JURISDICTIONS. YOU MAY HAVE ADDITIONAL WARRANTY RIGHTS UNDER LAW WHICH MAY NOT BE WAIVED OR DISCLAIMED. METLOGIX DOES NOT SEEK TO LIMIT YOUR WARRANTY RIGHTS TO ANY EXTENT NOT PERMITTED BY LAW.

## **8. Limitation of Liability**

EXCEPT FOR THE EXCLUSIVE REMEDY OFFERED BY METLOGIX ABOVE AND ANY REMEDIES THAT CANNOT BE EXCLUDED OR LIMITED UNDER LAW, METLOGIX, ITS AFFILIATES, SUPPLIERS AND CERTIFICATE AUTHORITIES WILL NOT BE LIABLE TO YOU FOR ANY LOSS, DAMAGES, CLAIMS, OR COSTS WHATSOEVER INCLUDING ANY CONSEQUENTIAL, INDIRECT OR INCIDENTAL DAMAGES, ANY LOST PROFITS OR LOST SAVINGS, ANY DAMAGES RESULTING FROM BUSINESS INTERRUPTION, PERSONAL INJURY OR FAILURE TO MEET ANY DUTY OF CARE, OR CLAIMS BY THIRD PARTY, EVEN IF ANY METLOGIX

REPRESENTATIVE HAS BEEN ADVISED OF THE POSSIBILITY OF SUCH LOSS, DAMAGES, CLAIMS, OR COSTS. IN ANY EVENT, METLOGIX' AGGREGATE LIABILITY AND THAT OF ITS AFFILIATES, SUPPLIERS, AND CERTIFICATE AUTHORITIES UNDER OR IN CONNECTION WITH THIS AGREEMENT WILL BE LIMITED TO THE AMOUNT PAID FOR THE SOFTWARE, IF ANY. THIS LIMITATION WILL APPLY EVENT IN THE EVENT OF A FUNDAMENTAL OR MATERIAL BREACH OR A BREACH OF THE FUNDAMENTAL OR MATERIAL TERMS OF THIS AGREEMENT

THE FOREGOING LIMITATIONS AND EXCLUSIONS APPLY TO THE EXTENT PERMITTED BY APPLICABLE LAW IN YOUR JURISDICTION. THIS LIMITATION OF LIABILITY MAY NOT BE VALID IN SOME JURISDICTIONS. YOU MAY HAVE RIGHTS THAT CANNOT BE WAIVED UNDER CONSUMER PROTECTION AND OTHER LAWS. METLOGIX DOES NOT SEEK TO LIMIT YOUR WARRANTY OR REMEDIES TO ANY EXTENT NOT PERMITTED BY LAW.

## **9. Export Rules**

You acknowledge that the Software is subject to the U.S. Export Administration Regulations and other export laws, restrictions, and regulations (collectively the "Export Laws") and that you will comply with the Export Laws. You will not ship, transfer, export, or re-export the Software, directly or indirectly, to: (a) any countries that are subject to US export restrictions (currently including, but not necessarily limited to, Cuba, Iran, North Korea, Sudan, and Syria) (each, an "Embargoed Country"), (b) any end user who you know or have reason to know will utilize them in design, development or production of nuclear, chemical or biological weapons, or rocket systems, space launch vehicles, and sounding rockets, or unmanned air vehicle systems (each, a "Prohibited Use"), or (c) any end user who has been prohibited from participating in U.S. export transactions by any federal agency of the U.S. government (each, a "Sanctioned Party"). In addition, you are responsible for complying with any local laws in your jurisdiction which may impact your right to import, export or use the Software. You represent and warranty that (i) you are not a citizen of, or located within, an Embargoed Country, (ii) you will not use the Software for a Prohibited Use, and (iii) you are not a Sanctioned Party. All rights to use the Software are granted on condition that such rights are forfeited if you fail to comply with the terms of this agreement.

## **10. General Provisions**

If any part of this Agreement is found void and unenforceable, it will not affect the validity of the balance of this Agreement, which will remain valid and enforceable according to its terms. This Agreement may only be modified in writing, signed by an officer of MetLogix, Inc. The English version of this Agreement will be the version used when interpreting or construing this Agreement. This is the entire Agreement between MetLogix and you relating to the Software and it supersedes any prior representations, discussion, undertakings, communications, or advertising relating to the Software.

## **11. Notice to U.S. Government End Users**

For U.S. Government End Users, MetLogix agrees to comply with all applicable equal opportunity laws including, if appropriate, the provisions of Executive Order 11246, as amended, Section 402 of the Vietnam Era Veterans Readjustment Assistance Act of 1974 (38 USC 4212), and Section 503 of the Rehabilitation Act of 1973, as amended, and the regulations at 41 CFR Parts 60-1 through 60-60, 60-250, and 60-741. The affirmative action clause and regulations contained in the preceding sentence will be incorporated by reference in this Agreement.

## **12. Compliance with Licenses**

If you are a business, company, or organization, you agree that, in addition to any license compliance checking performed by the Software, MetLogix or its authorized representative have the right, no more than once every twelve (12) months, upon ten (10) days' prior notice to you, to inspect your records, systems, and facilities to verify that your use of any and all MetLogix software is in conformity with your valid licenses from MetLogix. For example, MetLogix has the right to those of your records useful to determine whether installations of the Software have, or have not, been serialized, and you shall provide such records to MetLogix promptly upon request by MetLogix. Additionally, you shall provide MetLogix with all records and information requested by MetLogix in order to verify that your use of



any and all MetLogix software is in conformity with your valid licenses from MetLogix within thirty (30) days of MetLogix' request.

### **13. Peer to Peer Communications**

The Software may use your connection to a local area network, without additional notice, automatically connect to other MetLogix software and, in doing so, may indicate on the local area network that it is available for communication with other MetLogix software. These connections may transmit the IP Address of your connection to the local network but no personally identifiable information is ever transmitted or received through such network connections (except to the extent that IP addresses may be considered personally identifiable in some jurisdictions).