

The Gx200

A Digital Readout for Simple and Advanced Gauging Applications



- ✓ Supporting touchscreen and keypad controls
- ✓ Advanced gauging using sophisticated formulas
- ✓ Clean and intuitive user interface

What is the Gx200?

The Gx200 is an advanced digital readout system for performing single or multi-point gauge measurements at very high levels of precision and accuracy.

The Gx200 can be configured for up to 16 channels of input*.

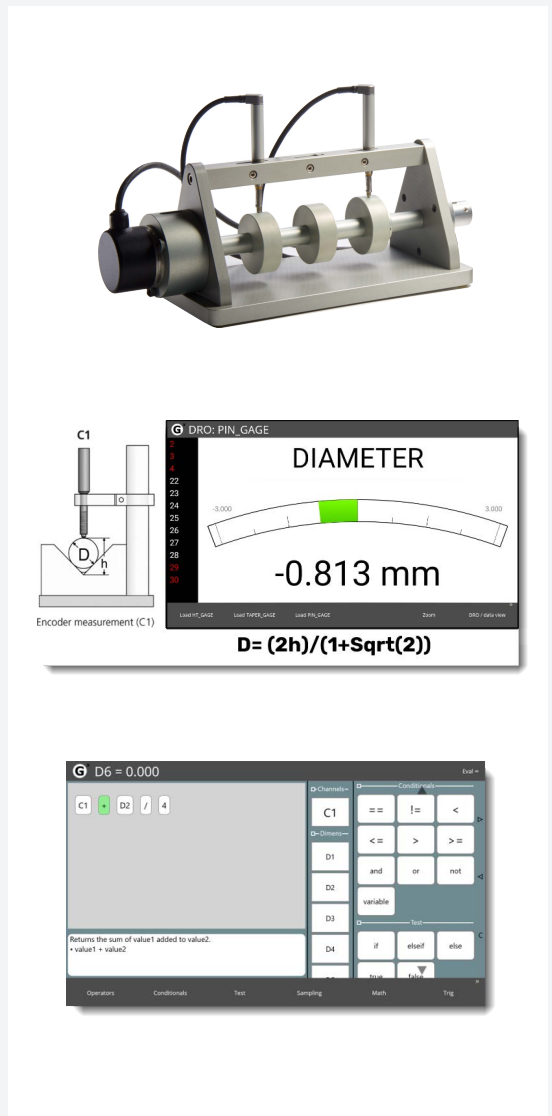
How the Gx200 Works

- ✓ The Gx200 utilizes formulas to define and display dimensions based on channel inputs.
- ✓ Formulas can be as simple as a single channel reading, or complex with use of powerful logic statements, employing mathematical calculations, and other dynamic functionality.

Quick Setup - Flexible Formula Entry

Multiple data entry mechanisms allow Parts to be set up quickly and easily, regardless of their complexity. Entry methods include:

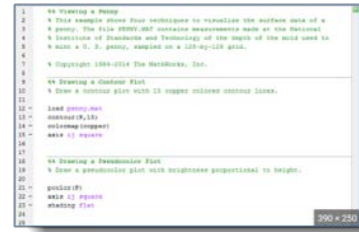
- ✓ **Intelligent formula builder:**
Use Channel Inputs, Math Operators and Conditional Logic functions directly from the internal graphical editor for building formulas.



*16 channels available for the Solartron Orbit® Interface only. All other input types are available up to 8 channels.

Quick Setup - Flexible Formula Entry

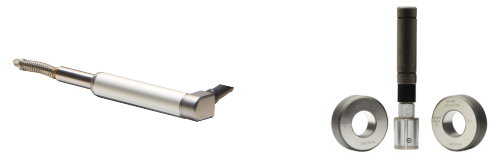
- ✓ **Generate direct keyboard entry:**
Use a USB or Bluetooth keyboard to type formulas directly into the dimension setup screen.
- ✓ **Upload externally authored scripts:**
Create part scripts and formulas in the external editor of your choosing and upload them to your Gx Part.



Wide Range of Supported Probe Types*

Flexible, compact, microprocessor-based gauge amplifier offering support for the following probe types:

- ✓ Analog and Digital Length Gages
- ✓ Full and Half Bridge LVDT Probes
- ✓ Air to Electronic Interface
- ✓ Solartron Orbit® Probe Network (USB)



Extensive Connectivity

- ✓ USB
- ✓ General Purpose Input Output (GPIO - Up to 24V logic level)
- ✓ RS-232
- ✓ Footswitch input
- ✓ Bluetooth peripherals
- ✓ Wi-Fi data exchange

Graphical Data Views

Multiple View Types provide flexibility in how gauging results can be viewed and reported. A clear indication of tolerance status (pass/fail) is always visible.

Display dimensions either individually, or with up to 7 simultaneously. In DRO view, you can display the dimensions with horizontal bar, vertical bar, or dial gauges.



*Contact us to learn more about supported interfaces.

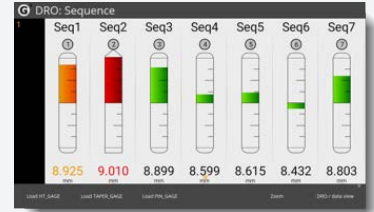
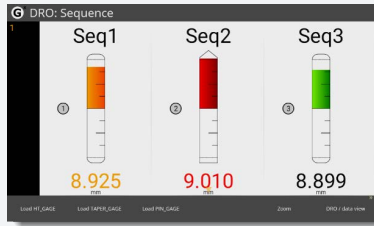
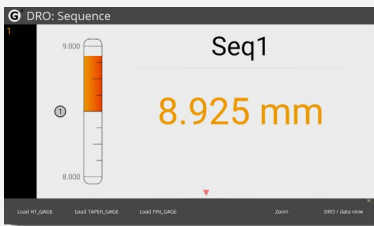
Color Coded Data View

A Parts Database collects and displays individual gauge results in a tabular sheet view, providing a quick way to view past results across multiple gauge dimensions.

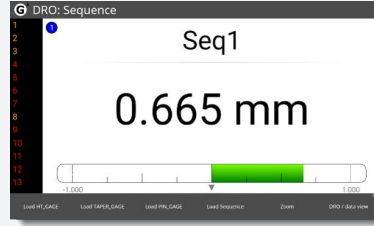
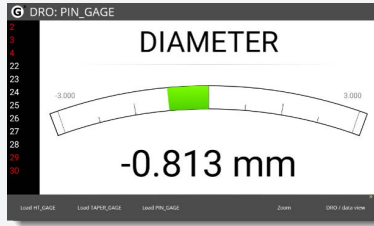
#	Seq1	Seq2	Seq3	Seq4	Seq5	Seq6	Seq7	Seq8
1	8.950 mm	8.950 mm	8.950 mm	8.950 mm	8.950 mm	8.950 mm	8.950 mm	8.950 mm
2	8.950 mm	8.950 mm	8.950 mm	8.950 mm	8.950 mm	8.950 mm	8.950 mm	8.950 mm
3	8.950 mm	8.950 mm	8.950 mm	8.950 mm	8.950 mm	8.950 mm	8.950 mm	8.950 mm
4	3.355 mm	3.521 mm	3.575 mm	3.608 mm	3.837 mm	4.895 mm	4.670 mm	4.944 mm
5	5.012 mm	5.012 mm	5.009 mm	4.147 mm	6.203 mm	6.347 mm	6.390 mm	6.389 mm
6	6.271 mm	6.315 mm	7.377 mm	7.495 mm	7.376 mm	7.377 mm	7.377 mm	7.402 mm
7	7.563 mm	7.916 mm	8.099 mm	8.915 mm	8.927 mm	8.953 mm	8.932 mm	
8	8.924 mm	8.927 mm	8.942 mm	8.934 mm	8.591 mm	8.831 mm		8.900 mm

Multiple View Types

View results using a variety of supported display types.

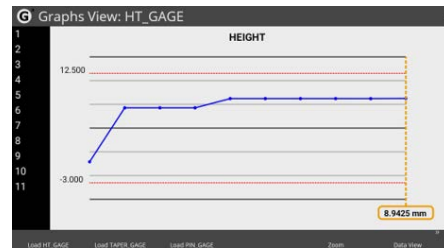


Seq	Value
Seq2	-1.259 mm
Seq3	-0.247 mm
Seq4	-1.259 mm
Seq5	-0.100 mm
Seq6	-0.058 mm
Seq7	-1.259 mm



Data Graph View

A graph-based view allows you to review measurement results over time, including upper and lower tolerance limits.



Stats Calculations View

A statistics view displays the calculated Min, Max, Range, Average, Std Deviation, and 6 Sigma values for the recorded data.

HEIGHT	
Min	-0.0175 mm
Max	8.9425 mm
Range	8.9600 mm
Average	7.7085 mm
Std Dev	2.5061 mm
6 Sigma	15.0364 mm

Data Handling

Multiple records management options create a flexible environment for gauging workflows.

- ✓ Export records data to USB Storage
- ✓ Send records data via RS-232
- ✓ Print records data to a Wi-Fi enabled printer
- ✓ Transmit records data wirelessly using the GxLink app, and from the GxLink app directly to Excel.

#	D1	D2	D3	D4	D5	D6	D7
1	0.660 mm	14.200 mm	0.266 mm	-1.250 mm	0.192 mm	-0.980 mm	0.710 mm
2	-1.490 mm	3.900 mm	0.011 mm	-0.410 mm	-0.860 mm	0.430 mm	-0.350 mm
3	-3.760 mm	13.600 mm	0.109 mm	-1.520 mm	0.800 mm	-0.480 mm	0.110 mm
4	-3.760 mm	13.600 mm	0.204 mm	0.050 mm	-0.200 mm	0.200 mm	-1.160 mm
5	-0.490 mm	6.200 mm	0.117 mm	-0.560 mm	0.340 mm	-0.440 mm	-0.470 mm
6	0.490 mm	-4.400 mm	-0.103 mm	0.670 mm	0.350 mm	-0.470 mm	-0.430 mm
7	-0.950 mm	4.700 mm	0.006 mm	-0.210 mm	-0.620 mm	-0.990 mm	0.170 mm
8	2.230 mm	-10.400 mm	-0.100 mm	1.790 mm	0.600 mm	0.270 mm	1.610 mm
9	0.960 mm	-1.100 mm	0.097 mm	0.290 mm	0.600 mm	1.220 mm	1.610 mm
10	0.960 mm	-1.100 mm	0.097 mm	0.290 mm	0.600 mm	1.220 mm	1.610 mm
11	-0.200 mm	3.100 mm	0.097 mm	-4.530 mm	-0.200 mm	-0.630 mm	-0.260 mm
12	2.880 mm	-13.400 mm	-0.116 mm	0.080 mm	-0.200 mm	-0.630 mm	-0.380 mm
13	4.140 mm	18.200 mm	0.136 mm	-1.250 mm	-1.200 mm	0.790 mm	-3.150 mm
14	2.910 mm	8.900 mm	0.305 mm	-2.600 mm	-2.320 mm	-0.330 mm	-1.490 mm



Advantages of the Gx200

- ✓ **Easy to program** - tackling both simple and complex gauge applications with the ability to enter and define gauge dimensions directly in the readout, or by using external scripting tools.
- ✓ **Advanced formula capabilities** - coupled with multiple I/O options, programmers have the flexibility needed to tackle today's demanding gauging challenges.
- ✓ **Data export and handling flexibility**
- ✓ **Extensive connectivity**



Gx200 Specifications

Display: 7" Color 1024 X 600 LCD, with an LED backlit capacitive touch screen.

Power supply (included): 100-240VAC, 50/60Hz, 0.8A. Power Input to Gx200: 12V.

Probe Inputs: Analog and TTL, Full and Half Bridge Transducers, Air to Electronic, Solartron Orbit®.

More probe types to be added soon!

GPIO: (8) assignable IO lines - 24Volt+

DRO Dimensions: 286 mm wide x 65 mm deep x 162 mm high.

DRO Baseplate Dimensions: 120 mm wide x 125 mm deep x 9.5 mm high



Available Configurations

The Gx200 is available in configurations up to 16 channels

4 and 8 channel configurations are available for any of the supported input types.

The Solartron Orbit® interface supports up to 16 channels.

Help and Resources

Please visit the support section at www.metlogix.com for access to Metlogix product documentation.

Watch tutorial videos for popular Gx & Mx functions at <http://www.youtube.com/metlogix>

Join the discussion on Facebook, search "Metlogix".

Contacts

175 Canal Street, Suite 503, Manchester, NH 03101 USA

Tel: 603.836.4452

Fax: 603.369.6499

Email: support@metlogix.com

Web: www.metlogix.com